




Year 6 School Journey

Information Evening for Parents and Carers

Year 6



Year 6 School Journey

MARCH 2026

PGL OSMINGTON BAY

PGL – Fully accredited



Halstow and PGL Risk Assessments

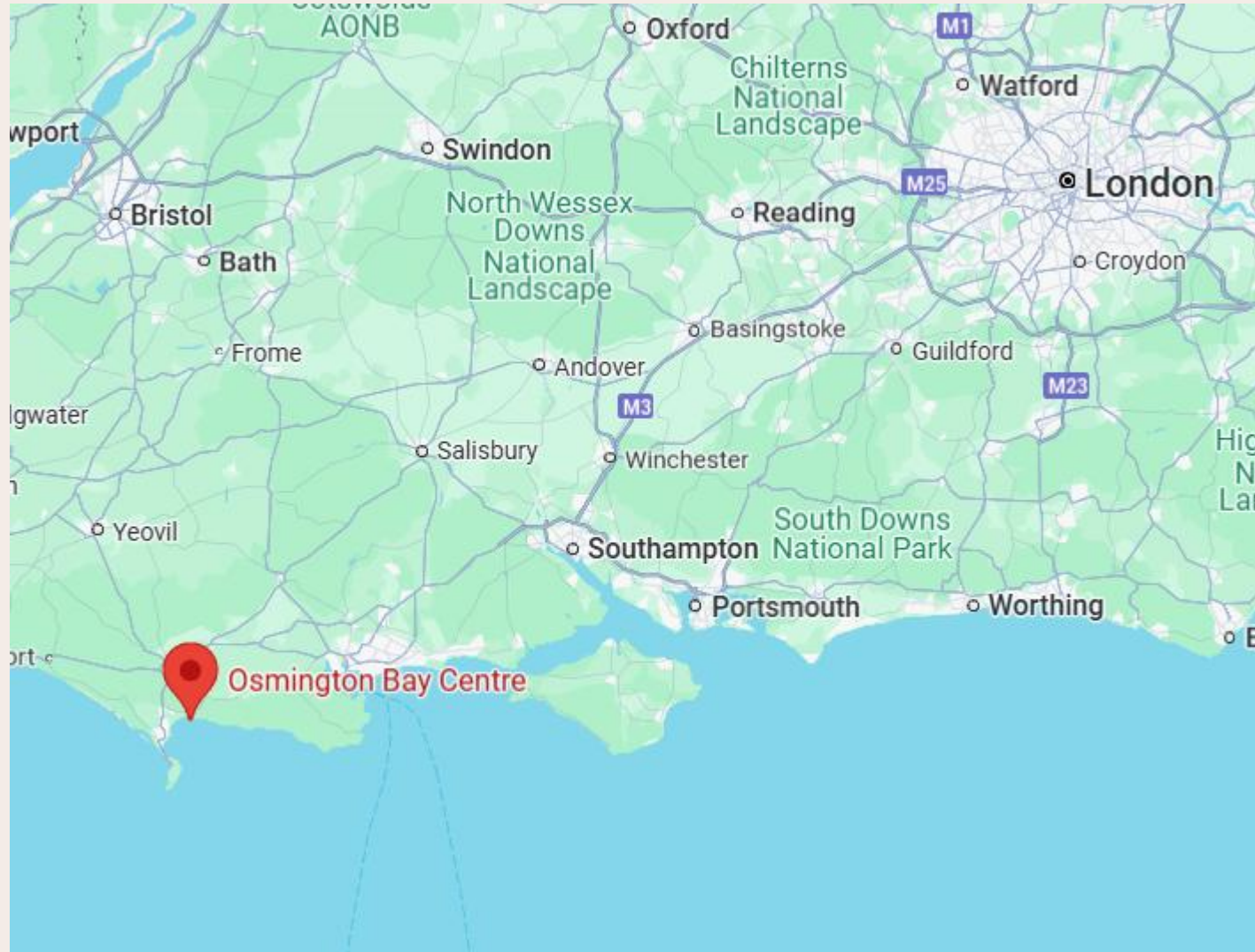
PGL Osmington Bay

Monday 9th March – Friday 13th March 2026



PGL Osmington Bay

Shortlake Lane, Weymouth DT3 6EG

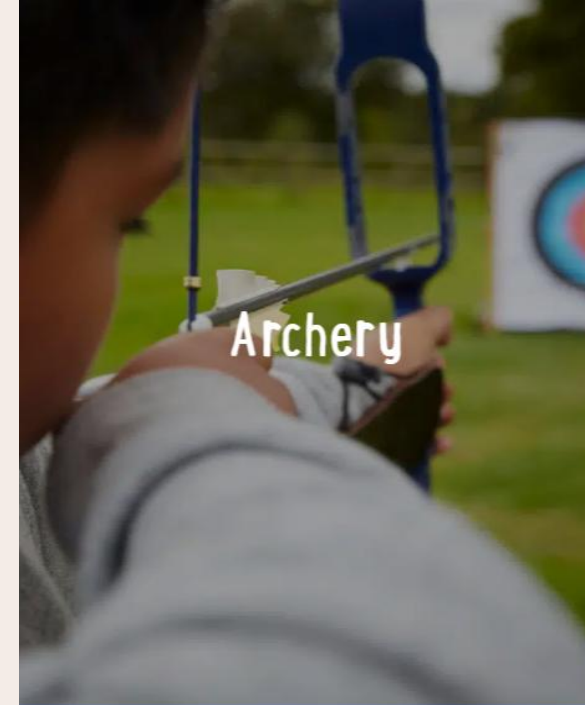


PGL Osmington Bay

Shortlake Lane, Weymouth DT3 6EG



Activities will include...



... and much, much more!

Sample daily itinerary



Schedule	Activities
07.00 - 08.50	Get up, get ready and fuel up for the day ahead with a hearty breakfast.
08.50 - 12.00	Morning activities - 2 sessions with a 10 minute break in-between.
12.00 - 13.50	Enjoy a fresh and tasty two-course hot lunch and some free time.
13.50 - 17.00	Afternoon activities - 2 sessions with a 10 minute break in-between.
17.00 - 19.00	Time to eat again - a different dinner menu each day.
19.00 - 21.00	Discos, campfires, quizzes and more - our evening entertainment programme keeps everyone engaged until bedtime.
21.00 / 21.30	Bedtime. Catch up on some zzz's ready to do it all again tomorrow!

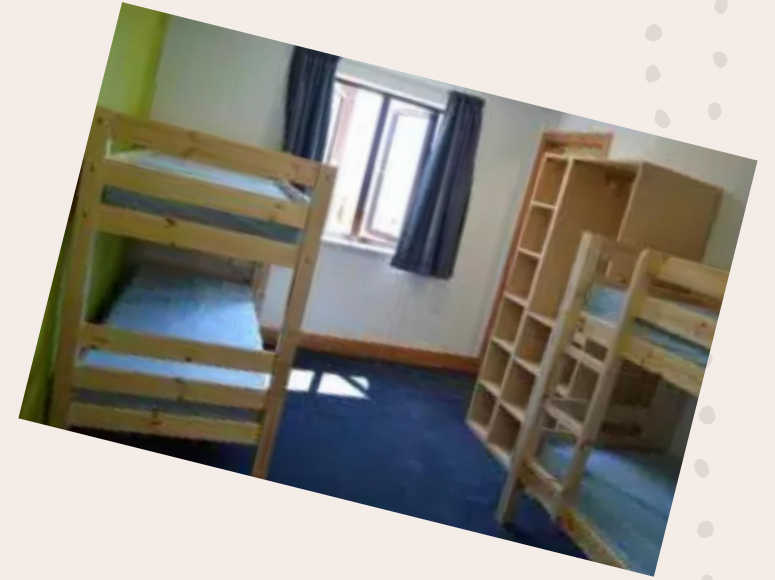
**Pupils sleep in bunk-bedded rooms of 4 with en suites.
All doors open to shared, supervised corridor.**



Rooms will be assigned.

Children will have the opportunity to request dorm mates.

We will do everything in our power to ensure they are bunking with at least one of their choices.



What to expect at mealtimes

All meals are freshly cooked, balanced and will give pupils plenty of energy to keep them going throughout the day.

Hot and cold meals with vegetarian options

Homemade soup every day

Self-service salad bar

Fresh fruit with every meal

Allergies, intolerances and special diets catered for



What to Pack:



PGL Packing Guide



Our top 20 essentials to pack for a PGL trip

You'll have more fun if well prepared!



1.

NIGHTWEAR & UNDIES

Don't forget that for some activities you'll need socks that cover your ankles. Yes, really!

2.

TOWELS

One for the shower and one for drying off after water activities

3.

TROUSERS/LEGGINGS FOR ACTIVITIES

At least 3 pairs but NOT jeans - if you get wet they are really uncomfortable and they take forever to dry.

4.

SHORTS

At least 2 pairs, although you might not need these in the winter!

5.

TRAINERS FOR ACTIVITIES

They don't need to be anything special as they could get muddy.



6.

SHOES FOR WATERSPORTS

They'll probably get wet, so old trainers or similar are best.

7.

SHOES FOR INDOORS & EVENINGS

The shoes you wear for activities may get muddy so bring another pair for the evenings/indoors if you can.

8.

FLEECES/ SWEATSHIRTS

It's not cool to be cold! Bring layers - even in Spain or the South of France the evenings can be chilly.



9.

LONG SLEEVED T-SHIRTS/TOPS

They don't need to be anything special as they could get muddy.

10.

T-SHIRTS/TOPS

Old ones are fine.

11.

WATERPROOF JACKET/COAT

Yes, you will still be doing activities even if it rains!

12.

EVENING CLOTHES

You might get wet or muddy doing activities so you'll need one or two sets of clothes for the evenings and final night disco.

13.

A HAT

Keep the sun off or the heat in! Depending on the time of year, you'll need either a sunhat or a warm hat for the winter.

14.

SWIMMING KIT

You'll also need a rash vest if you are going to Spain or the South of France.

15.

SLEEPING BAG/ DUVET & PILLOW

Check that this hasn't been included as part of your booking.



16.

TORCH

Shhh...if you need something in the middle of the night, you need to be able to see what you're doing without waking everyone up!

17.

PLASTIC BAGS FOR WET CLOTHES

Lake water doesn't smell good after a couple of days so make sure you can keep your wet stuff separate!

18.

SMALL BAG/DAYSACK

You'll need to take dry clothes to change into after some activities.



19.

REFILLABLE WATER BOTTLE

Be well hydrated! PGL centres have plenty of places where you can refill a water bottle.

20.

TOOTHBRUSH (& TOILETRIES)

Soap, shower gel, toothpaste etc. Don't forget sunscreen is essential in summer.


What to pack (page 2)

- - Packed lunch for day 1 (due to longer journey)
- - Slippers
- - Bath/hand towel (for use in your room)
- - Named bin liners (not black) for bringing any damp or wet clothes/towels home (black bin liners can be mistaken - for rubbish bags!)
- - Plenty of LAYERS! Long sleeves.
- - Spare socks / gloves / hats
- - Thermal layers + waterproof coat or poncho
- - Any medication required including spare asthma inhalers (medical form)
- - Pillow & single duvet/sleeping bag
- **£5 pocket money in a labelled envelope given to class teacher**
- **LABEL ALL BAGS AND CLOTHES**

Lost property

We recommend you write a list of what you pack to check before you come home. If you do leave anything behind, please contact your party leader who will contact PGL. Postage will be charged for returning lost items.

PLEASE DO NOT BRING

- 
- ✘ Electrical devices
 - ✘ Computer games
 - ✘ Jewellery/valuables
 - ✘ Aerosols

We'll be keeping you updated...

- Daily link
- Photos from each group
- Aim for equity

Any Questions?

